

OWNER'S MANUAL

IMPORTANT

DO NOT OPERATE THIS TOOL UNLESS THESE INSTRUCTIONS HAVE BEEN CAREFULLY READ AND UNDERSTOOD.



C200 *1/2" - 2" Remote Squeeze Off Tool*

OWNERS MANUAL



ECN 1813

**C200 (1/2 TO 2 in.) EXTENDED REACH
SQUEEZE OFF TOOL FOR PE PIPE**

Page 2 of 7

**DO NOT OPERATE THIS TOOL UNLESS THESE INSTRUCTIONS HAVE BEEN CAREFULLY
READ AND UNDERSTOOD**

Preliminary Assembly:

To connect the C615-A115 static grounding kit, mount the grounding tool lead to the head with the 1/4" hardware supplied (see attached). Clean all connections prior to assembly. If not using a ratchet to power the drive screw by the top hex, insert the "T" handle into the cross hole in the top of the power screw and thread the bolt into the end to secure it. **Do not use extension on the "T" handle.** The tool as supplied by the manufacturer has sufficient leverage to perform the task it was designed for.

Operating Instructions:



Figure 1

A) Installation on Pipe

- 1) Inspect tool to ensure that it is clean and free from any debris that may hinder proper operation. The head and gauge plate assembly must be clean, free of dirt and debris to function properly. Open folding handle and secure with attached pin as shown at left. (figure 1)
- 2) When using the optional grounding spike C615-A115 fully install the grounding spike in firm ground near the tool. Moist soil is required. Soak the area that the grounding spike will be inserted into if necessary.

3) Grasping the Aluminum handle with one hand, turn the steel "T" handle with the other hand counterclockwise to fully open the squeeze jaws. Do not attempt to over open the jaws as this may damage the tool. Inspect the 2 centering springs. They should now be under tension.

4) Set the gauge plate stop on the side of the unit to the proper pipe size and SDR setting required. The gauge plate assembly may be stiff, it will be easier to set if the gauge plate is pulled out slightly from body of tool while turning it. If the detent action is not positive, the gauge plate mechanism requires cleaning and/or service. Position the arrow on the gauge plate setting so that it faces the bronze barrel nut as shown at right. (Figure 2)



Figure 2



Figure 3



Figure 4



Figure 5

- 5) Place the head of the tool on the pipe such that the pipe runs between the squeeze jaws. Note that the aluminum handle is parallel to the pipe as shown in *figure 3*. Place the tool centrally on the pipe using the centering springs to assist in location as shown in *figure 4*. As a rough guide note that the inside edge of the pipe is in approximate alignment with the side of the tool body as shown in *figure 5*. Make sure that the pipe stays in contact with both centering springs.

B) Squeezing the Pipe

- 1) Advance the squeeze bar by turning the drive screw clockwise until the lower jaw starts to touch the pipe. During the "squeeze-off" operation keep tool at right angles to the pipe.
- 2) The rate of squeeze is very important in minimizing the damage to the pipe walls. Advance the squeeze no faster than 2" per minute. Increase this time in colder weather below 32° F (0° C). Consult your local utility as to their specific procedure for this operation. As the pipe is

squeezed the centering springs will relax and fold out of the way of the pipe. (Figure 6)

- 3) Continue slowly squeezing until the gauge plate stops come in contact with the bronze barrel nut. (See Figure 6) **DO NOT CONTINUE SQUEEZING ONCE THE GAUGE STOPS HAVE BEEN REACHED OR TOOL DAMAGE MAY RESULT.** Keep in mind; it may not be necessary to squeeze the pipe all the way to the gauge stops to obtain satisfactory flow control. **NEVER USE EXTENSIONS ON THE "T" HANDLE OR RATCHET TO GET MORE SQUEEZE, AS TOOL DAMAGE MAY RESULT.**



Figure 6

C) Releasing the Pipe

- 1) To avoid any damage to the plastic pipe, it is critical that a slow release rate be achieved. A release rate of ½" (12.5 mm) per minute is recommended. This time allows for the controlled rebound of the plastic, decreasing the chances of slow crack propagation. Below 32° F (0° C), the release rate should be slower. Consult your local utility as to their specific procedure for this operation.
- 2) Unscrew the powerscrew slowly, not exceeding the release rate. Continue to open the tool at this rate until it can be removed from the pipe.



- 3) **WARNING: Do not continue to unscrew the tool past the point that the barrel nut comes in contact with the bottom of the cut-out in the tool head side plate, or damage may result.**

D) Re-rounding of Pipe

- 1) This tool can not be used for re-rounding pipe due to the length of the handle. It should also be noted that PE pipe rebounds on it's own to its near original shape very well. Squeeze points on the pipe are typically marked in some fashion for future reference. Consult your local utility as to their specific procedure for this operation.



E) WARNING

- 1) Do not exceed the recommended squeeze and release rates. Temperatures below 32° F (0° C) will require slower squeeze and release rates. Release is more critical than squeeze; thus slower rates are required.



WARNING

- 2) When performing a squeeze, stay at least 3 pipe diameters away from fittings, fusion areas and previously squeezed areas.



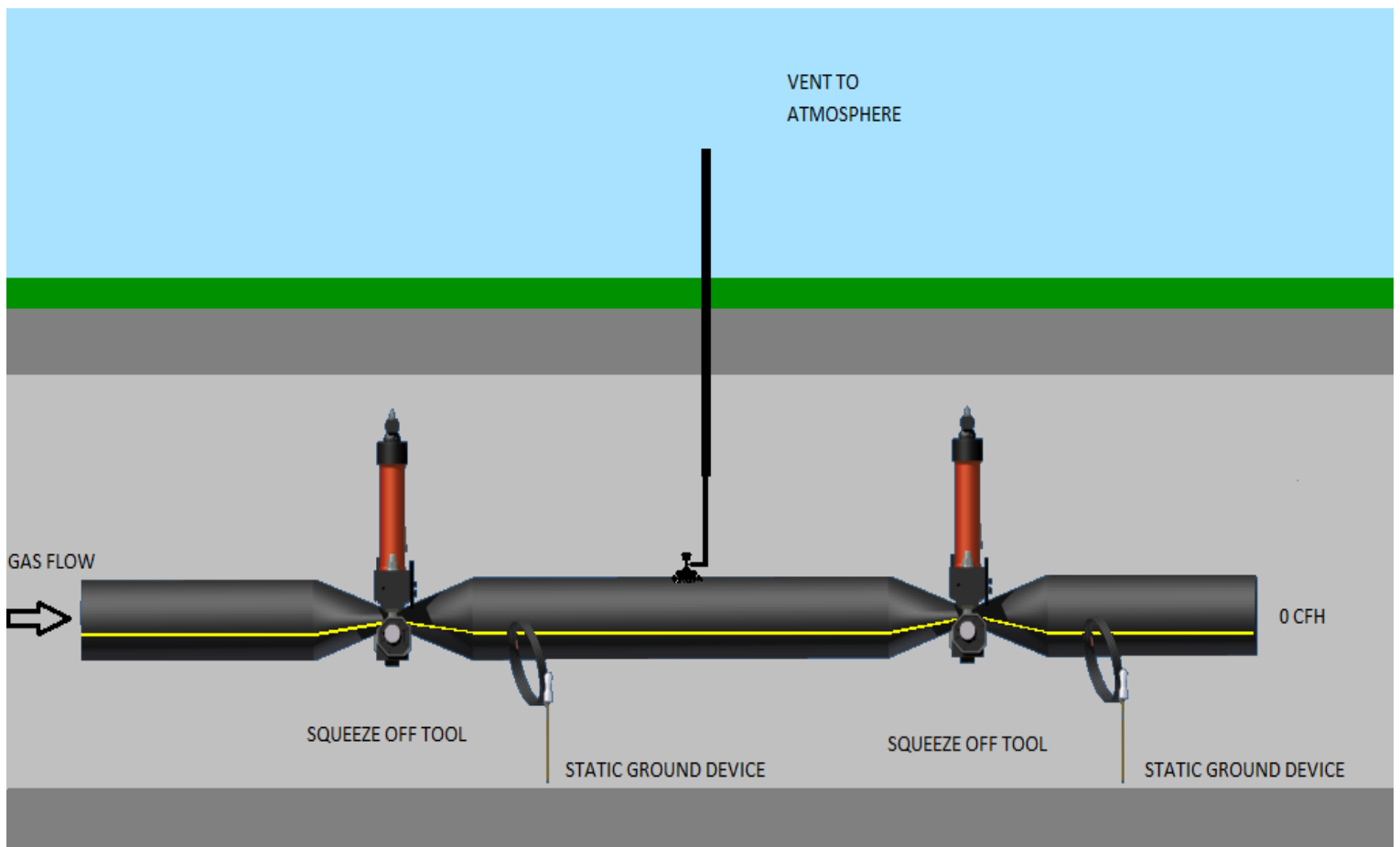
WARNING

- 3) To ensure the removal of any static electric charge buildup, ensure the grounding system is properly planted in the soil. Your tool can easily be fitted with a grounding spike if not so equipped. Contact your FOOTAGE TOOLS dealer for installation instructions and parts.

Important Notice

If you experience difficulty obtaining flow control when squeezing HDPE pipe, we recommend you perform a double squeeze and vent to atmosphere.

Please consult your local Utility for their specific operating procedure.



ECN 1813	C200 (1/2 TO 2 in.) EXTENDED REACH SQUEEZE OFF TOOL FOR PE PIPE	Page 5 of 7
----------	--	-------------

F) Maintenance

Ensure the tool is in good operating order by routinely inspecting the following points prior to use:

Inspect the centering springs for damage.	Replace as needed
Inspect the gauge plate assembly for positive detent action	Clean, repair or replace parts as needed
Inspect the grounding spike connections.	Replace as needed
Inspect the tool for free operation.	Clean, repair or replace parts as needed
Inspect the squeeze jaws for surface damage.	Replace as needed

G) Service

Partially disassemble the tool by removing the screw indicated in *figure 7*. This will allow the power screw to be unthreaded from the barrel nut and lifted out from the top of the tool. The barrel nut is then pulled out from the side of the tool body. This in turn will free the active jaw for removal from the tool head. Should your tool require more extensive service work please refer to the attached drawing in the next section (H) for assembly instructions and parts information.

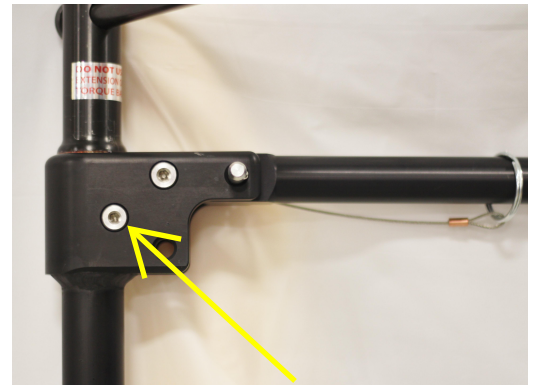
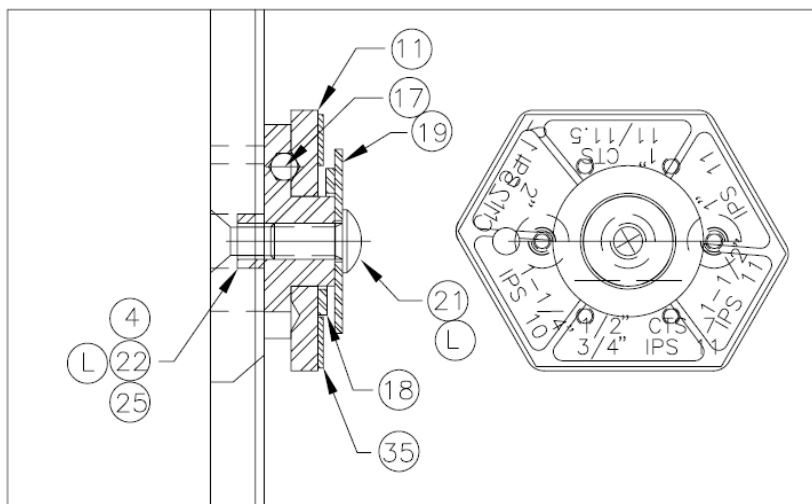
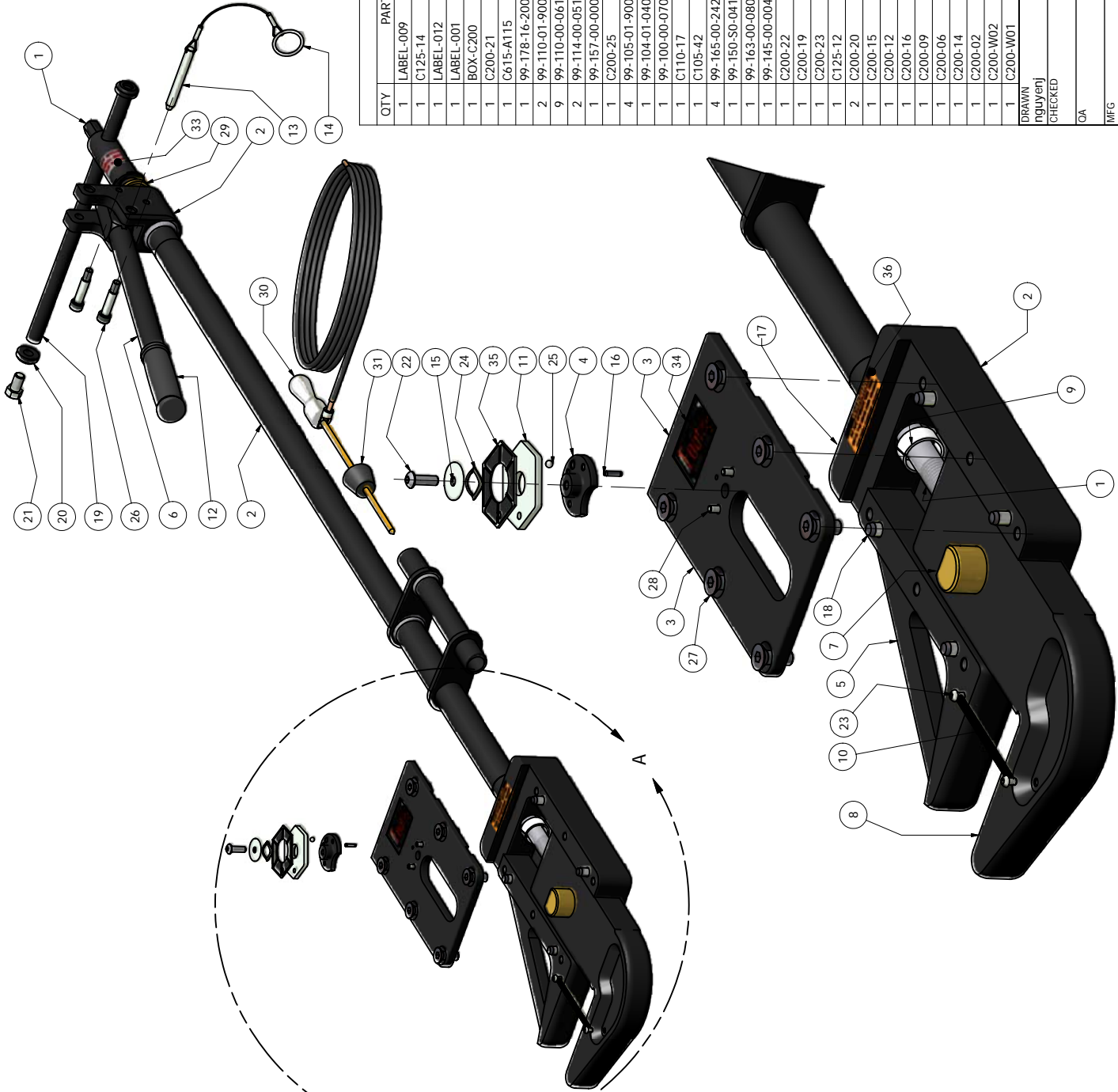


Figure 7

Inspect the power screw for dirt.	Clean and lubricate.
Inspect the tool head cavity for dirt.	Clean as needed
Inspect the power screw thread for damage.	Repair or replace as needed
Inspect the barrel nut for damage.	Replace as needed

Detail of Gauge Plate Assembly and Installation





Parts List

QTY	PART NUMBER	DESCRIPTION	ITEM
1	LABEL-009	LABEL - OWNERS MANUAL	36
1	C125-14	GAUGE PLATE LABEL	35
1	LABEL-012	FOOTAGE TOOLS LABEL - NEW	34
1	LABEL-001	LABEL, DO NOT USE EXTENSION	33
1	BOX-C200	BOX FOR C200	32
1	C200-21	STOPPER	31
1	C615-A115	GOURND SPIKE ASM	30
1	99-178-16-2008	BUSHING, FLANGED 1"	29
2	99-110-01-9008	FHCS 10-24 X 1/2	28
9	99-110-00-0612	FHCS 3/8-16 X 3/4	27
2	99-114-00-0516	SHOULDER BOLT 3/8-16 X 1 1/4	26
1	99-157-00-0006	CHROME BALL	25
1	C200-25	SPRING WASHER W-385	24
4	99-105-01-9004	BHCS 10-32 X 1	23
1	99-104-01-0408	BHCS 1/4-20 X 1/2	22
1	99-100-00-0706	HHCS 7/16 X 3/4	21
1	C110-17	END WASHER	20
1	C105-42	TORQUE BAR ASM	19
4	99-165-00-2428	DOWEL PIN 3/8 X 1 3/4	18
1	99-150-50-0416	SHSS 1/4-20 X 1	17
1	99-163-00-0808	ROLL PIN 1/8 X 1/2	16
1	99-145-00-0041	WASHER 1/4 (FASTENAL #33207)	15
1	C200-22	KEY RING 1.5" O.D	14
1	C200-19	HITCH PIN & LANYARD	13
1	C125-12	GAUGE PLATE	12
1	C200-23	GRIP WORKS #GP-6	11
2	C200-20	SPRING, SPEC #E0240-034-2500	10
1	C200-15	WEAR RING	9
1	C200-12	BOTTOM JAW	8
1	C200-16	BARREL NUT	7
1	C200-09	HANDLE BAR	6
1	C200-06	TOP JAW	5
1	C200-14	GAUGE PLATE HUB	4
1	C200-02	SIDE PLATE	3
1	C200-W02	POWER TUBE WELDMENT	2
1	C200-W01	POWER SCREW WELDMENT	1

FOOTAGE TOOLS INC.

C200-A1 ASSEMBLY DWG
2" REM. SQUEEZE OFF TOOL

7/17/2009

DRAWN: [signature]
 CHECKED: [signature]

OA

MFG

APPROVED: [signature]

REMOVE ALL SHARP CORNERS
 UNLESS SPECIFIED OTHERWISE

SCALE: NTS

SIZE: C

DWG NO: C200-A2

REV: D

SHEET 1 OF 1

DETAIL A
 SCALE .5

I) Footage Tools Limited Warranty

FOOTAGE TOOLS INC, hereinafter sometimes referred to as “Manufacturer” warrants each new industrial product of its own manufacture to be free from defects in material and workmanship, under normal use and service for one full year after delivery to the end user. **Warranty is void unless warranty registration card is completed in full and returned to FOOTAGE TOOLS INC within thirty days from the date of purchase.** This warranty and any possible liability of **FOOTAGE TOOLS INC** hereunder are in lieu of all other warranties, expressed, implied, or statutory, including, but not limited to, any warranties of merchantability or fitness for a particular purpose.

The parties agree that the Buyers **SOLE AND EXCLUSIVE REMEDY** against Manufacturer, whether in contract or arising out of warranties, representations, instructions, or defects shall be for the replacement or repair of defective parts as provided herein. In no event shall Manufacturers liability exceed the purchase price of the product. The Buyer agrees that no other remedy (including, but not limited to, in incidental or consequential loss) shall be available to him. If during the warranty period, any product becomes defective by reason of material or workmanship and Buyer immediately notifies Manufacturer of such defect, Manufacturer shall, at its option, supply a replacement part or request return of the product to its plant in Toronto, Canada. No parts shall be returned without prior written authorization and a return goods authorization number from Manufacturer, and this Warranty does not obligate the Manufacturer to bear any transportation charges in connection with the repair or replacement of defective parts. The Manufacturer will not accept any charges for labour and/or parts incidental to the removal or remounting of parts repaired or replaced under this Warranty.

This Warranty shall not apply to any part or product which shall have been installed or operated in a manner not recommended by **FOOTAGE TOOLS INC**, nor to any part or product which shall have been neglected, or used in any way which, in the manufacturers opinion, adversely affects its performance; nor negligence of proper maintenance or other negligence, fire, or other accident: nor if the unit has been altered or repaired outside of a **FOOTAGE TOOLS INC** authorized dealership in a manner of which, in the sole judgement of **FOOTAGE TOOLS INC** affects its performance stability or reliability: nor to any product in which parts not manufactured or approved by **FOOTAGE TOOLS INC** have been used, nor to normal maintenance services or replacement of normal service items. Equipment and accessories not of our manufacture are warranted only to the extent of the original Manufacturers Warranty and subject to their allowance to us, if found to be defective by them.

The original purchaser, user is responsible for “downtime” expenses and all business costs and losses resulting from a warrantable failure. **FOOTAGE TOOLS INC** specifically disclaims any responsibility for any damages of any kind or description, whether to property or person, in any way connected with or arising out of the use of **FOOTAGE TOOLS INC** products.



IMPORTANT NOTICE

*Warranty registration
now available online.*

Please visit
www.footagetools.com
and click on
'warranty registration'.

54 Audia Crt. Unit #1
Vaughan, Ontario
Toll Free: 1-888-737-3668
www.footagetools.com



Model: _____

S/N: _____